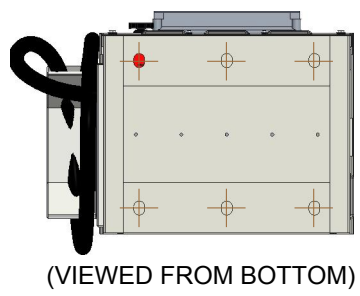
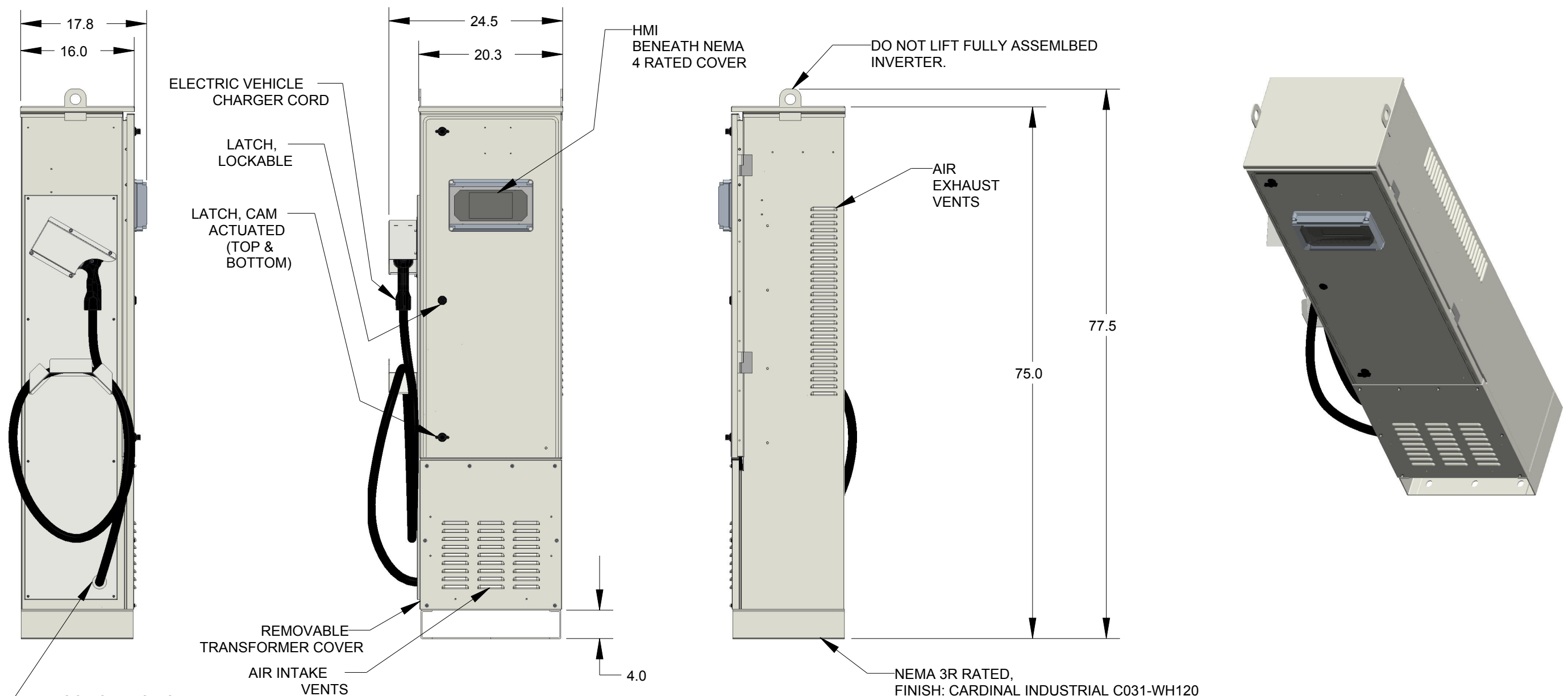


REVISION HISTORY				
ZONE	REV	DESCRIPTION	DATE	APPROVED
	1.0	RELEASE FOR REVIEW	08/19/15	JMW
	1.1	REVISED DESCRIPTION TO ADD CA30	09/09/15	JMW



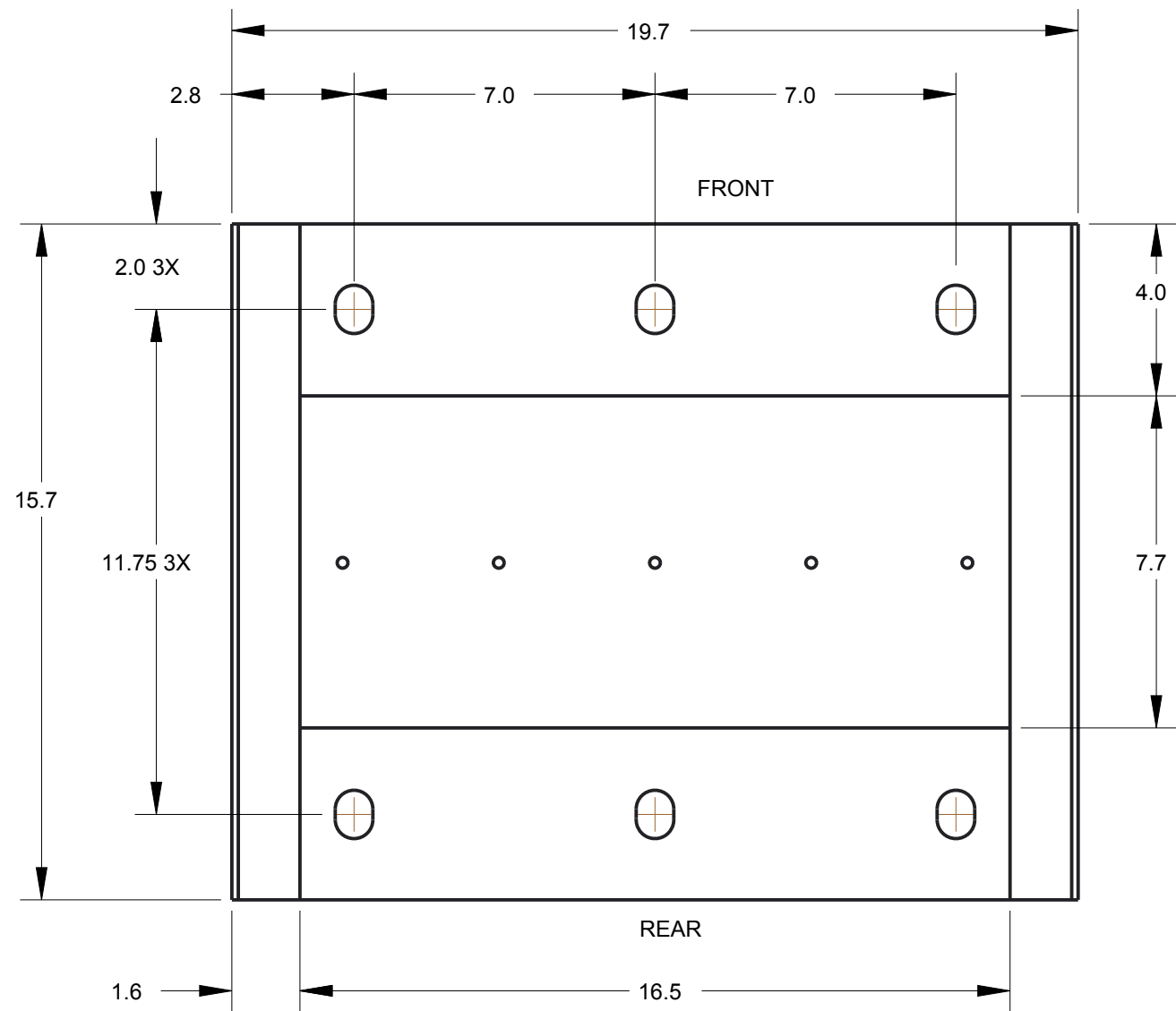
- NOTES:
1. THE FOUNDATION MUST BE SUITABLE FOR THE WEIGHT OF THE INVERTER.(590 LBS).
 2. THE UNEVENNESS OF THE FOUNDATION MUST BE LESS THAN 0.25%.
 3. RECOMMENDED MOUNTING HARDWARE: 1/2-13.

DO NOT DISTRIBUTE
PROPRIETARY PROPERTY OF PRINCETON POWER SYSTEMS
 THIS DOCUMENT CONTAINS PROPRIETARY INFORMATION OF PRINCETON POWER SYSTEMS INC. AND ITS RECEIPT OR POSSESSION DOES NOT CONVEY ANY LICENSE OR RIGHTS TO COPY OR REPRODUCE IT DISCLOSE ITS CONTENTS OR TO MANUFACTURE, USE OR SELL ANYTHING IT MAY DESCRIBE, WITHOUT THE WRITTEN APPROVAL OF PRINCETON POWER SYSTEMS. REPRODUCTION OR COPYING, DISCLOSURE, OR USE OF THIS DOCUMENT OR ANY OF ITS CONTENTS WITHOUT THE EXPRESS WRITTEN AUTHORIZATION OF PRINCETON POWER SYSTEMS IS STRICTLY PROHIBITED.

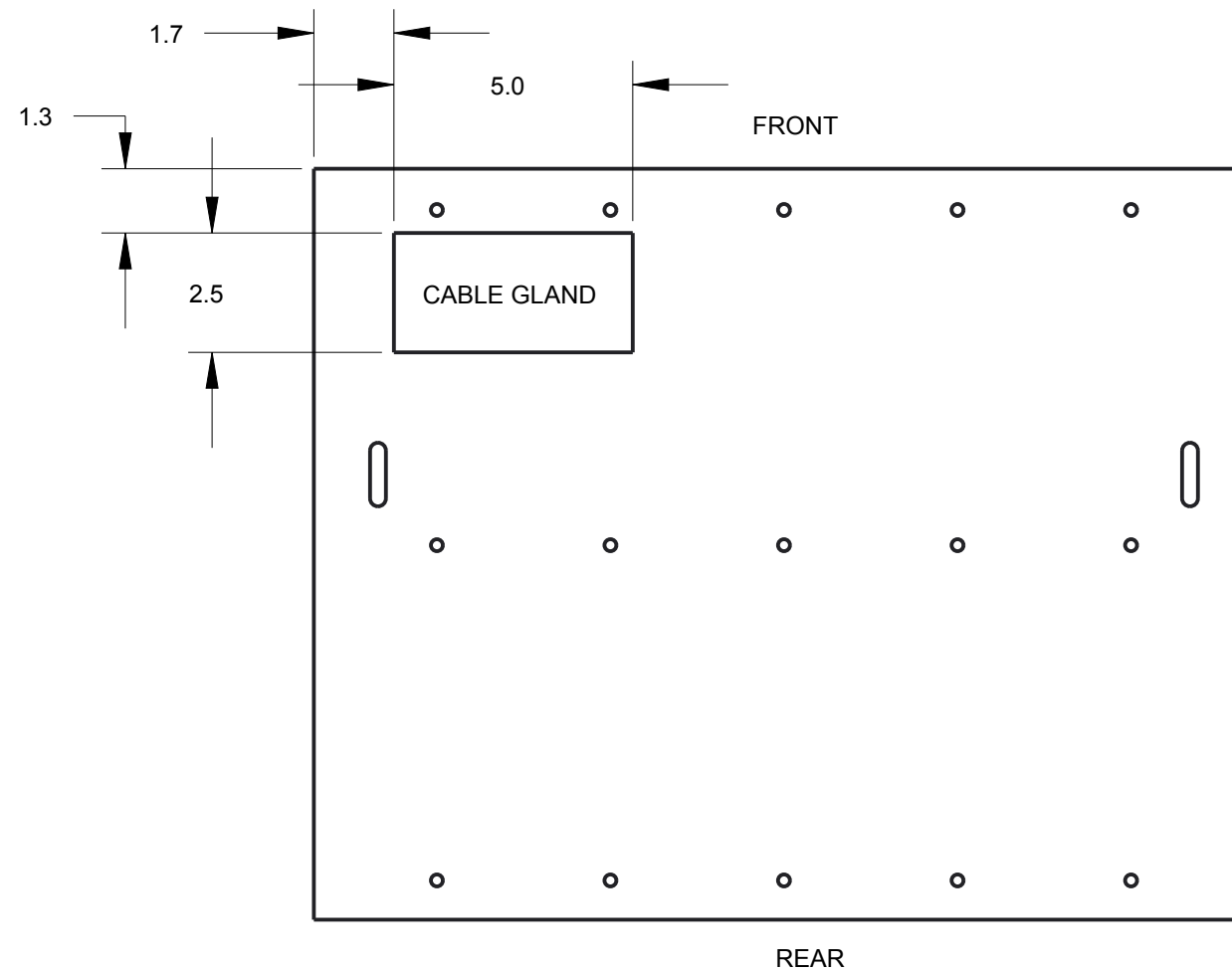
APPROVALS	INITIAL	DATE
PREPARED BY	TRL	8/19/15
REVIEWED BY	JMW	8/19/15
APPROVED BY	TRL	8/19/15

PRINCETON POWER SYSTEMS
 3175 Princeton Pike
 Lawrenceville NJ, 08648
 (609) 955-5390
 (609) 751-9225
 www.princetonpower.com

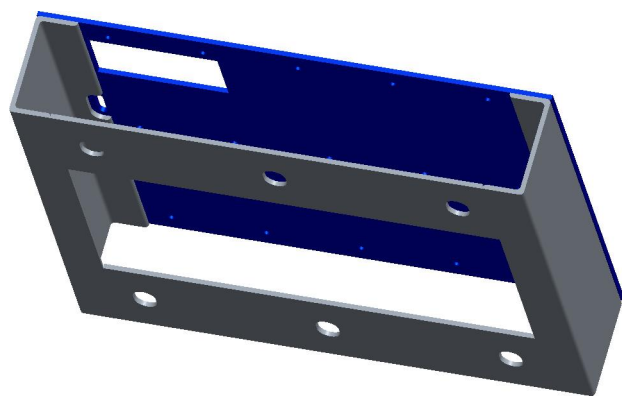
UNLESS OTHERWISE SPECIFIED TOLERANCES: MACHINED PARTS: FRACTIONS: ± 1/32 DECIMALS: X.X: ± 0.030 X.XX: ± 0.015 X.XXX: ± 0.005 ANGLES: ± 1/2°		DESCRIPTION	
		INTERFACE DRAWING, CA-10/30	
SCALE	FILE #	SIZE	DWG#
0.065	CA-30	B	2575-0055
			REV
			1.1
			SHEET 1 OF 2




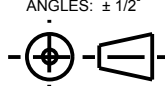
MOUNTING BASE ONLY DETAIL
VIEWED FROM BOTTOM
SCALE 0.250



CONDUIT ENTRY DETAIL SHOWN
IN UPPER RIGHT CORNER OF BASE
(4" ABOVE MOUNTING BASE)
VIEWED FROM BOTTOM



DO NOT DISTRIBUTE
PROPRIETARY PROPERTY OF PRINCETON POWER SYSTEMS
THIS DOCUMENT CONTAINS PROPRIETARY INFORMATION OF PRINCETON POWER SYSTEMS INC. AND ITS RECEIPT OR POSSESSION DOES NOT CONVEY ANY LICENSE OR RIGHTS TO COPY OR REPRODUCE IT DISCLOSE ITS CONTENTS OR TO MANUFACTURE, USE OR SELL ANYTHING IT MAY DESCRIBE, WITHOUT THE WRITTEN APPROVAL OF PRINCETON POWER SYSTEMS. REPRODUCTION OR COPYING, DISCLOSURE, OR USE OF THIS DOCUMENT OR ANY OF ITS CONTENTS WITHOUT THE EXPRESS WRITTEN AUTHORIZATION OF PRINCETON POWER SYSTEMS IS STRICTLY PROHIBITED.

APPROVALS	INITIAL	DATE	 3175 Princeton Pike Lawrenceville NJ, 08648 www.princetonpower.com (609) 955-5390 (609) 751-9225
PREPARED BY	TRL	8/19/15	
REVIEWED BY	JMW	8/19/15	
APPROVED BY	TRL	8/19/15	
UNLESS OTHERWISE SPECIFIED TOLERANCES: MACHINED PARTS: FRACTIONS: ± 1/32 DECIMALS: X.X: ± 0.030 X.XX: ± 0.015 X.XXX: ± 0.005 ANGLES: ± 1/2°			DESCRIPTION
			INTERFACE DRAWING, CA-10/30 SIZE B DWG# 2575-0055 REV 1.1
SCALE 0.156	FILE # CA-30	SHEET 2 OF 2	